

# High pressure regulator HD550

- Inlet pressure up to 750 bar and operating pressures up to 550 bar



Fittings and gauges optional

## Description:

HD550 is a single stage high pressure regulator and is designed as a piston pressure regulator and reduces the pressure of compressed gases or liquids to a maximum outlet pressure of 550 bar.

## Design:

To guarantee a good control characteristic of HD 550 even for low pressures piston diameters are different (depending on flow and pressure).

The outlet pressure of HD 550 is adjustable without strength even at high working pressures by capture vented construction and a control spindle with axial bearing.

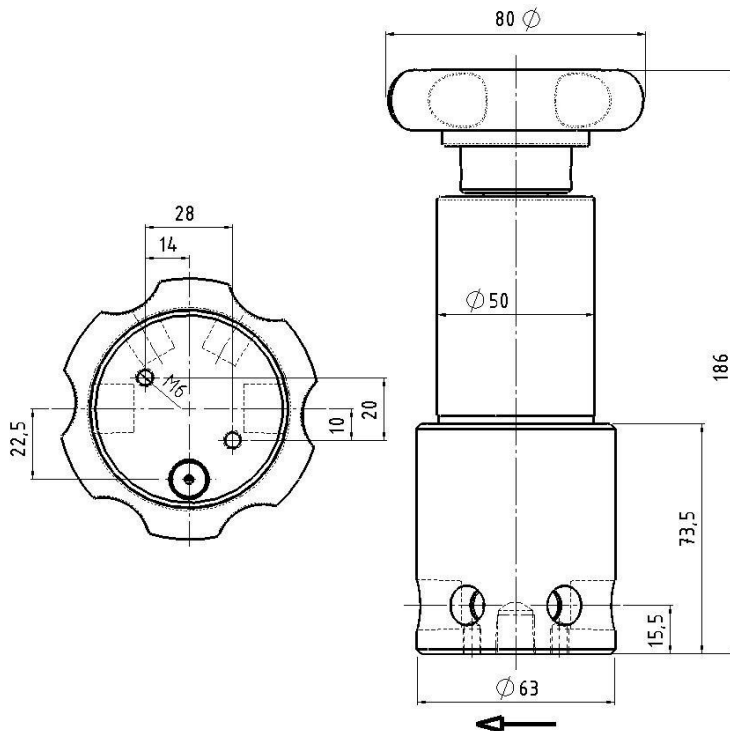
HD 550 can be equipped optionally with inlet and outlet gauge.

## Technical details:

Material:	brass stainless steel 1.4404
Seat size:	Ø 1,70 Ø 6,35 (balanced)
Flow capacity:	Kv 0,03 (Ø 1,70 ) : Kv 0,7 (Ø 6,35)
Seat:	PCTFE
Gaskets:	EPDM / viton
Max. Inlet pressure:	750 bar
Outlet pressure ranges:	0,5 - 100 bar 10 - 550 bar
Operating temp.:	-20°C to +60°C
Dimensions:	Ø80 x 186 (mm)
Weight:	2,5 kg
Threads:	in-/outlet NPT 3/8 f

## Hornung Quality standard

The company Hornung is certified to **DIN EN ISO 9001 and ISO 14001:2009**. All single parts are manufactured, assembled and tested by in-house production. The finished parts are therefore under all criteria of German quality control with 100% final inspection.



#### Application area:

This pressure regulator is constructed for high in- and outlet pressures.

With its captured vent this pressure-regulator is particularly suitable for use as a pilot pressure-regulator, e.g. in control systems in connection with dome pressure regulators.

The stainless steel version with elastomere made of viton permits the use for corrosive media with this pressure-regulator. Using the captured vent version, customer has to assure, that venting is connected to customers exhausting system.

It is recommend to integrate a fine filter of at least 40 $\mu$  in front of HD 550 and to install relief valve behind HD 550 for protecting customer's equipment/system.

#### Accessories:

7. Gauges, compression fittings and accessories

8. Flanges, fine filter F1 (see separate data sheet), safety valves available on request

#### Ordering information:

##### Material:

- 1 = brass
- 2 = stainless steel 1.4404

##### Seat sizes:

- 1 =  $\varnothing$  1,70
- 2 =  $\varnothing$  6,35 (balanced)

##### Gaskets:

- 1 = EPDM
- 2 = viton

##### Outlet pressure:

- 1 = 100 bar
- 2 = 550 bar

##### Capture venting:

- 1 = none
- 2 = with capture venting

##### Gauges:

- 1 = none
- 2 = with inlet and outlet gauge

#### Order example:

Regulator type	
<b>46</b>	<b>HD550</b>

<b>46-</b>	<b>1</b>	<b>1</b>	<b>1</b>	<b>1</b>	<b>1</b>	<b>2</b>	<b>Medium</b>
Type	Mat.	Seat	Gasket	Pres.	Vent	Gauge	Medium